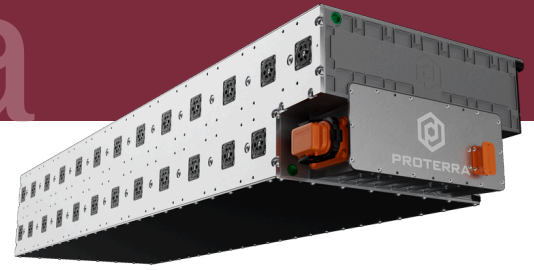


Onyx Strata



H2-23

Proterra® Battery Pack Specifications

	Parameter	Specification
Energy Density	Nominal Installed Energy	125 kWh
	Gravimetric Energy Density	175 Wh/kg
	Volumetric Energy Density	268 Wh/L
Voltage	High Voltage Range (Min-Nom-Max)	460-675-773 V
	Low Voltage	12V, 24V
Dimensions	Height	347 mm
	Width	620 mm
	Length	2183 mm
Life	80% State of Health (SOH) based on Gross discharge throughput (GDT)	198 MWh
Temperature	Ambient Temperature	-30°C to +55°C
	Type of Cooling	Liquid, 50/50 Water Ethylene Glycol
Ingress	Ingress Protection	IP6k9k / IPxxB
Communication	Communication	CAN J1939
	Diagnostics	Proprietary (DM1 capable)
Configurations	ESS	Up to 16 packs in parallel
Charge	Continuous charge performance	0.5 C
	Continuous regen performance	0.5 C/0.5 E
	Peak charge performance (300 sec)	1.0 C
	Continuous discharge performance	1.3 C/1.2 E
	Peak discharge performance (60 sec)	3.0 C/3.0 E
	Peak regen performance (60 sec)	1.0 C/1.0 E
	Charge time (20-80% State of Charge)	54 minutes

**Specific Conditions Apply*

Tested in accordance with SAE J2929, UN38.3, ISO 20653, IEC 60068-2-1, SAE J2464, ECE R100.03



American Innovation.
Proven Performance.
Buy America and BABA Compliant.